

# coolbit Tutu UV Flap Hat - Europe Design, Japan Cooling Technology!

## coolbit • KID'S flap hat

UV + <sup>With</sup> cooling function



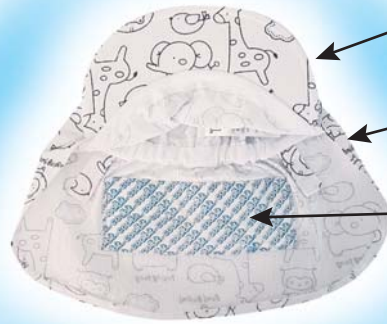
Product name: coolbit • Flap hat
Product number: TUCBHT / K01(Color)
Free size: 50 ~ 56cm
Standard age: 2-8 years old children



Coolbit / High water absorption pad based on evaporative cooling is incorporated on the back of the flap. Keeping one cool and refreshed in the summer !

### About the hat

Tutu is a brand for KID'S hat developed in EU Poland. The hats are produced in collaboration with the Japanese "coolbit" brand. To protect the skin of delicate children, the body of the hat meets EU UV shielding standards with 100% cotton material examind. (UV +30 or +50 - Note 1) In addition, it is an innovation combining EU design with the cooling technology of Japan which incorporates heat cooling function based on evaporative cooling, these making the back of the head cool to counter the heat of summer.



Upper part of the hat and flap part is **100% cotton**.  
Our UV blocking rate for harmful ultraviolet protection matches EU standard **UV + 30**  
Built-in high water absorption pad. **Thermal cooling function based on evaporative cooling.**

**Note 1:** What is UV + 30, + 50;  
UPF value of UV protection index which is adopted in Australia and Europe and the United States is displayed. It shows the relative ability of protection against "A wave" "B wave" ultraviolet rays. Good; UV + 15, 20, excellent; +25, 30, 35, more excellent; +40, 50, 50 or more.



Reversible!  
Two different patterns for wear in 1 hat.

WHITE

BLUE

High water absorption pad integrated.



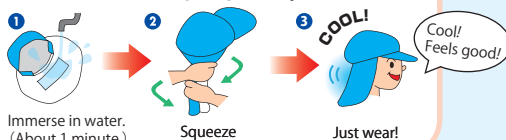
Product name: coolbit • Flap cap
Product number: TUCBHT / KR01(Color)
Free size: 50 ~ 56cm
Standard age: 2-8 years old children



Product name: coolbit • Flap cap
Product number: TUCBCP / K01(Color)
Free size: 50 ~ 56cm
Standard age: 2-8 years old children

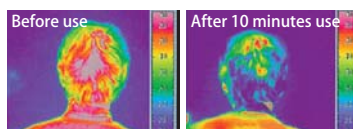
### How to use coolbit®

Immerse in water, Squeeze, Just wear!



Cool with vaporization heat.

### Cooling effect -10°C or more



Measurement; Thermoviewer

©TUTU / KOBAYA Co Ltd 日曜発明ギャラリー JAPAN  
Contact us;